



## Using PANTONE® Named Colors with Wasatch

### Introduction

Wasatch SoftRIP has an extensive set of functions for handling spot colors. This includes a powerful Color Atlas Generator, a Color Neighborhood Generator, and a Color Database Manager. You can use these functions to increase color fidelity and control so that your output is more accurate and consistent.

PANTONE® color libraries are the preferred means of selecting, approving, and communicating printed colors. The purpose of this technical note is to provide instructions for using PANTONE® named color libraries with Wasatch SoftRIP.





## Using PANTONE® Named Colors with Wasatch

---

### Important Notice

A licensed copy of [PANTONE® Color Manager](#) is required to use PANTONE® Color Libraries with Wasatch SoftRIP. PANTONE® Color Manager is a product of X-Rite Incorporated. The license for use of PANTONE® Color Manager and PANTONE® products can be granted only by X-Rite Incorporated.

Wasatch Computer Technology LLC is not a licensee of the PANTONE® Color System and does not license the PANTONE® Color Libraries. These libraries must be licensed by the user. You may need to upgrade your version of Wasatch SoftRIP to the latest version to use the methods described in this technical note.

Changes or updates to Wasatch SoftRIP, PANTONE® Color Manager, or the CxF color data exchange format may prevent the use of PANTONE® Color Libraries with Wasatch SoftRIP.

VistaLogics assumes no obligation and makes no representations or warranties, express or implied, in law or in fact, with respect to the utility, quality or characteristics of the methods or technologies described in this technical note.

### Wasatch Color Database and CxF Data



The International Organization for Standardization has adopted the graphic data exchange format (CxF), the most recent of which is [ISO 17972-4:2018](#). The CxF standard defines a method for encoding data defining spot colors in XML. Extensible Markup Language (XML) is used to format data so that it is human and computer readable, simple, and self-documenting.

As of Version 7.3, Wasatch SoftRIP can import Spot Color Characterization Data that is formatted in accord with CxF.

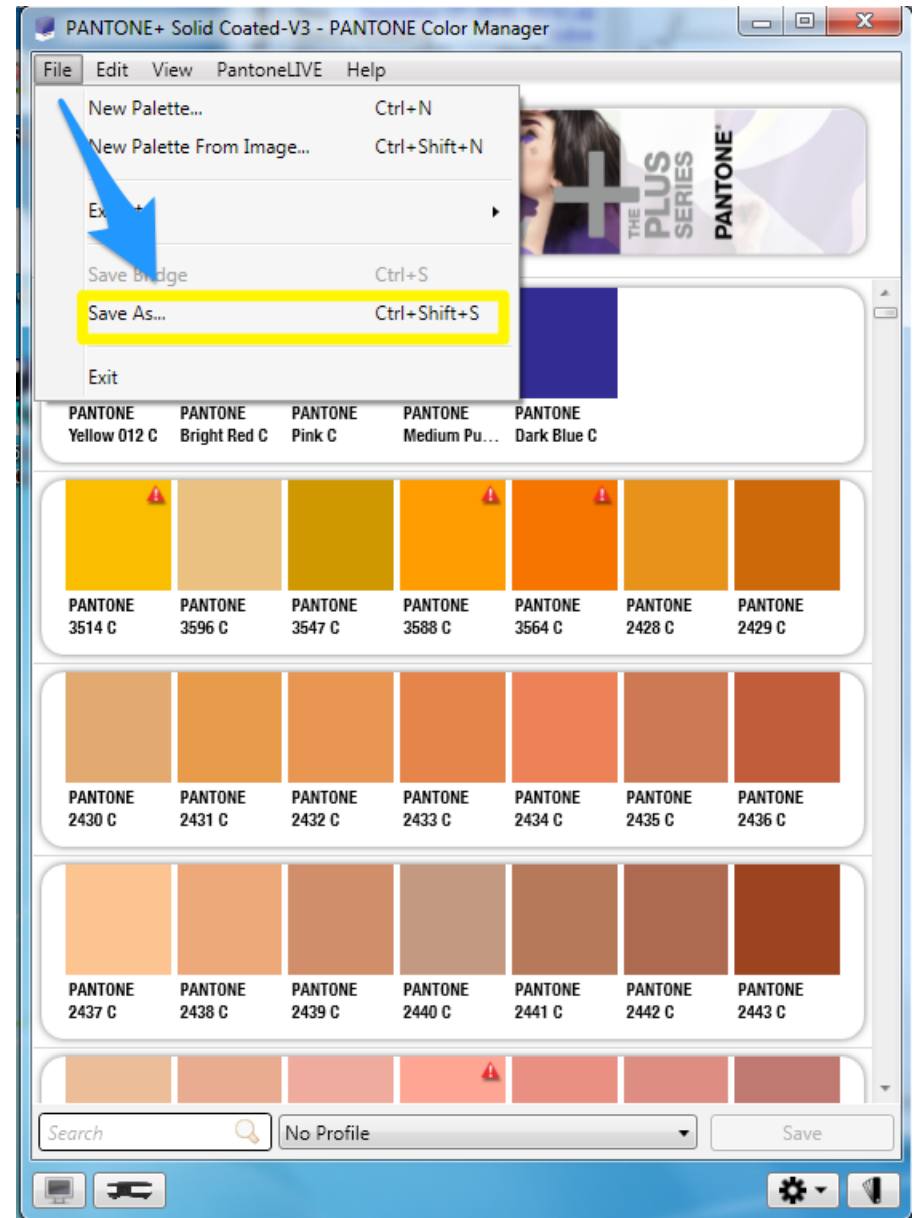


## Using PANTONE® Named Colors with Wasatch

### Creating a CxF PANTONE® Color File

You will need PANTONE® Color Manager to create a PANTONE® Color Book CxF file. These instructions assume that you have a licensed version of this program installed.

Start PANTONE® Color Manager. Make sure you load the most recent set of PANTONE® Color Books. Once the Color Books are loaded, select the one you wish to use as Special Colors in Wasatch SoftRIP.

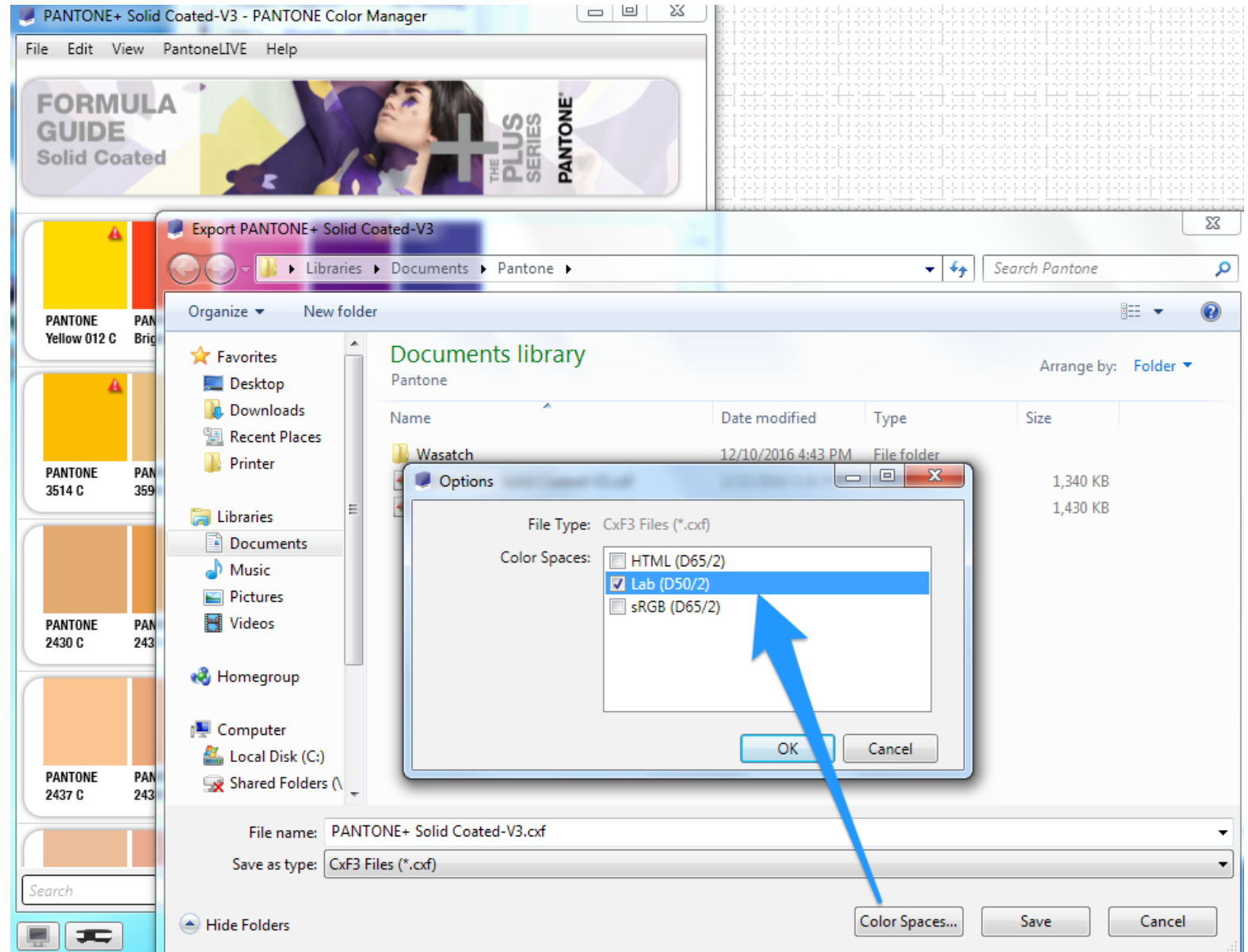




## Using PANTONE® Named Colors with Wasatch

### Creating a CxF PANTONE® Color File (continued)

Make sure the Lab Color Space is selected.

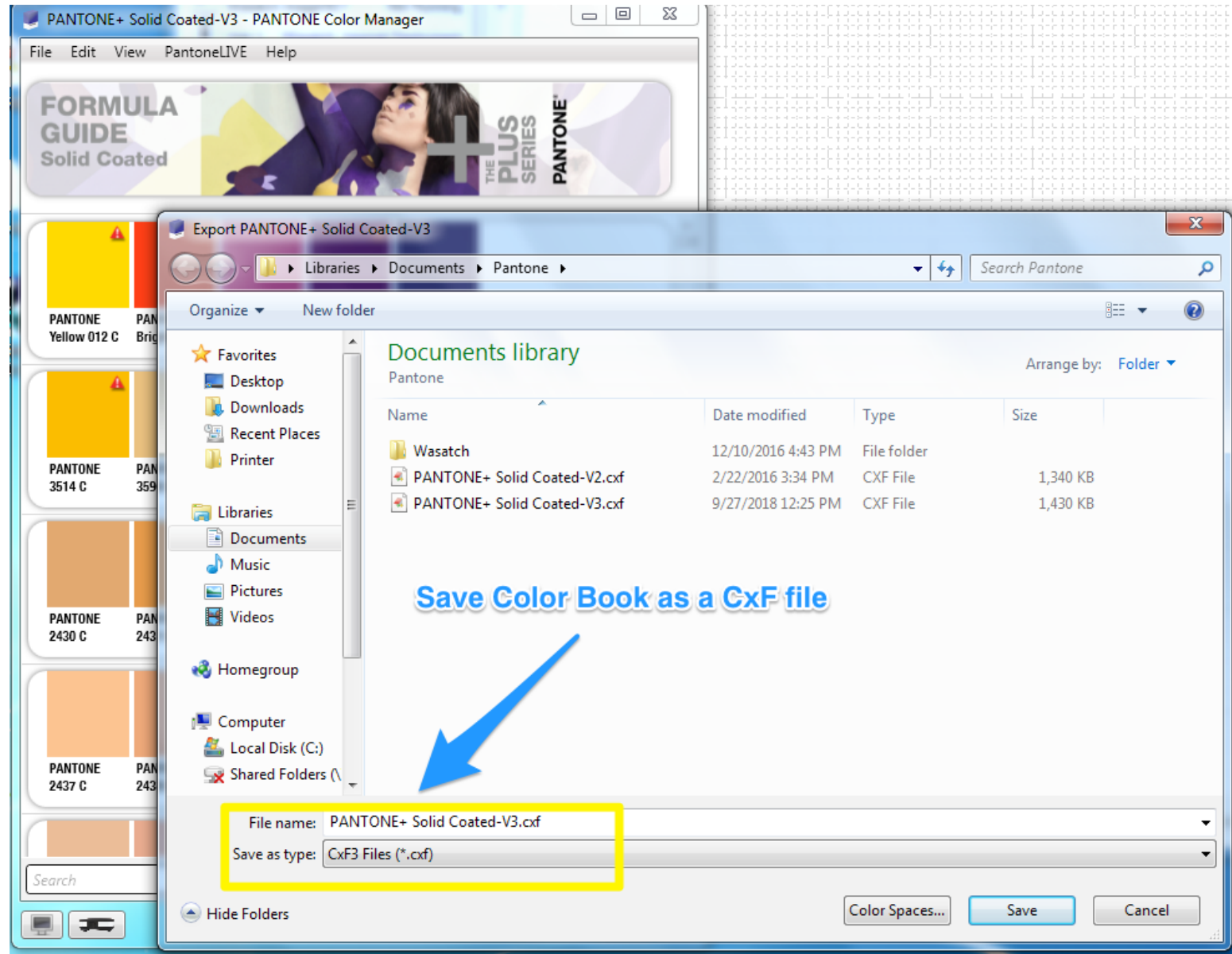




## Using PANTONE® Named Colors with Wasatch

### Creating a CxF PANTONE® Color File (continued)

Save the PANTONE® Color Book data in the CxF format.

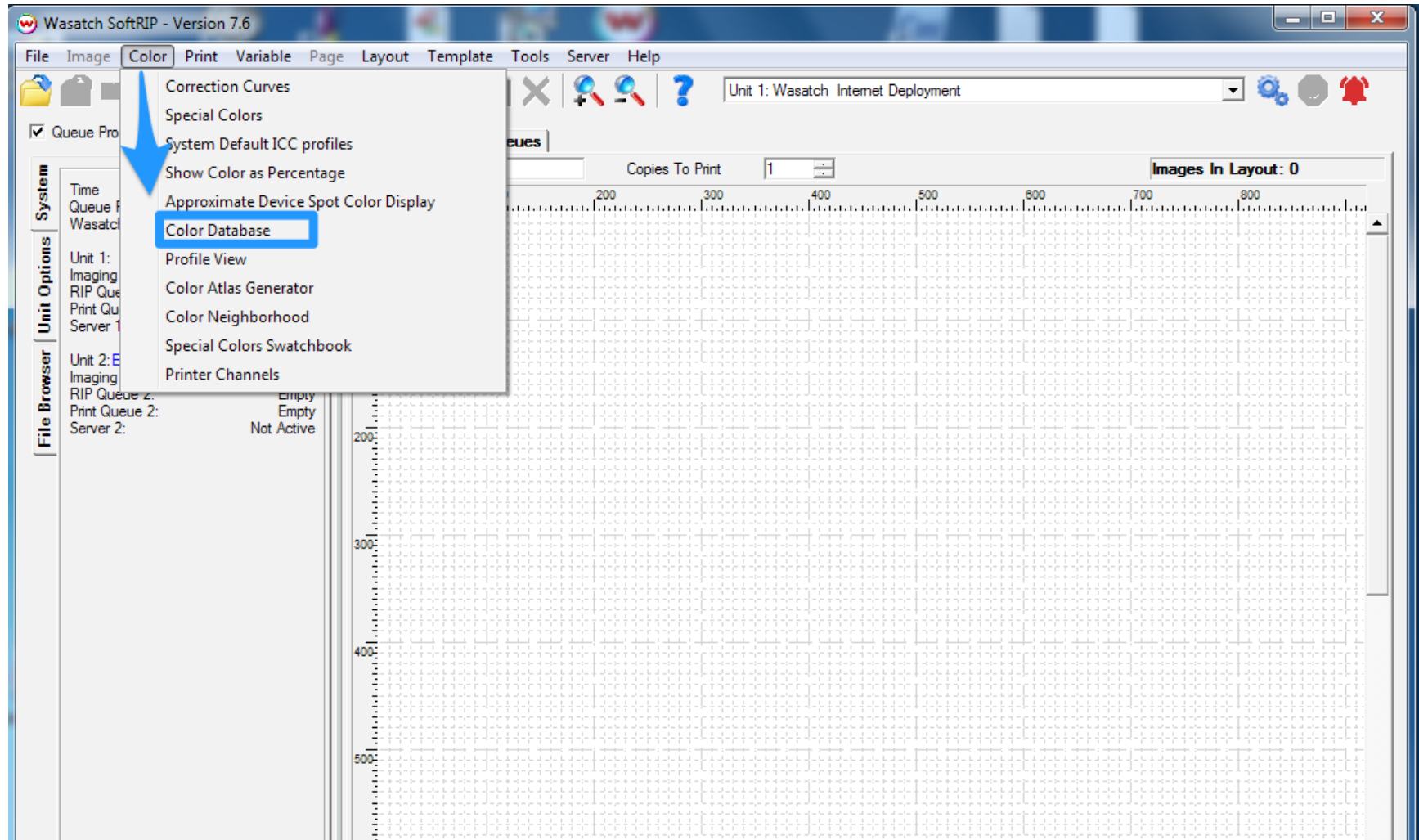




## Using PANTONE® Named Colors with Wasatch

### Importing CxF Data into a Wasatch Color Database

Now that you have created a CxF file with a set of named color patches, you are ready to import the patches into Wasatch. Begin by starting Wasatch SoftRIP. Then select Color->Color Database from the main menu.



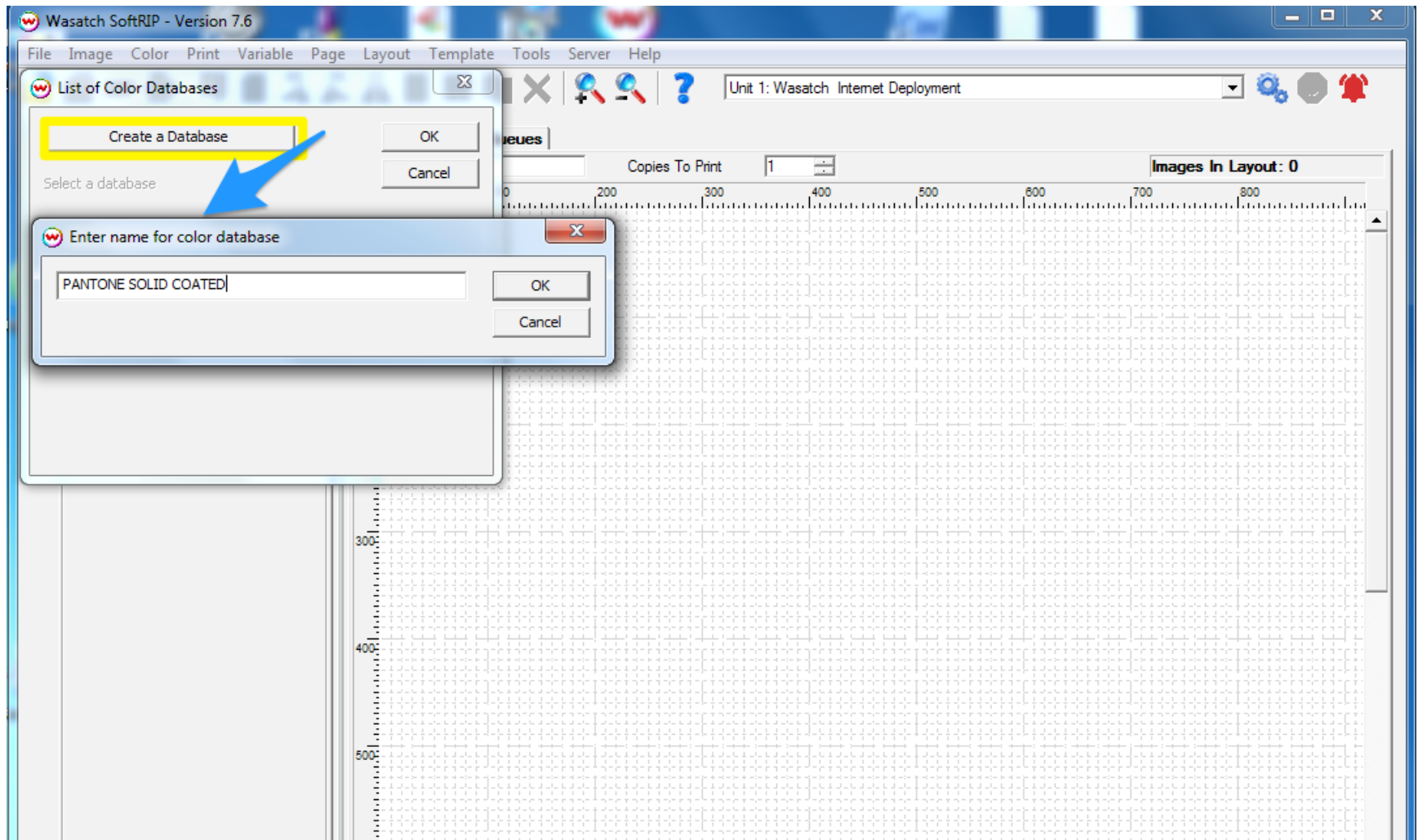




## Using PANTONE® Named Colors with Wasatch

Importing CxF Data into a Wasatch Color Database (continued)

Click “Create a Database” and give it a meaningful name. Finally press OK.

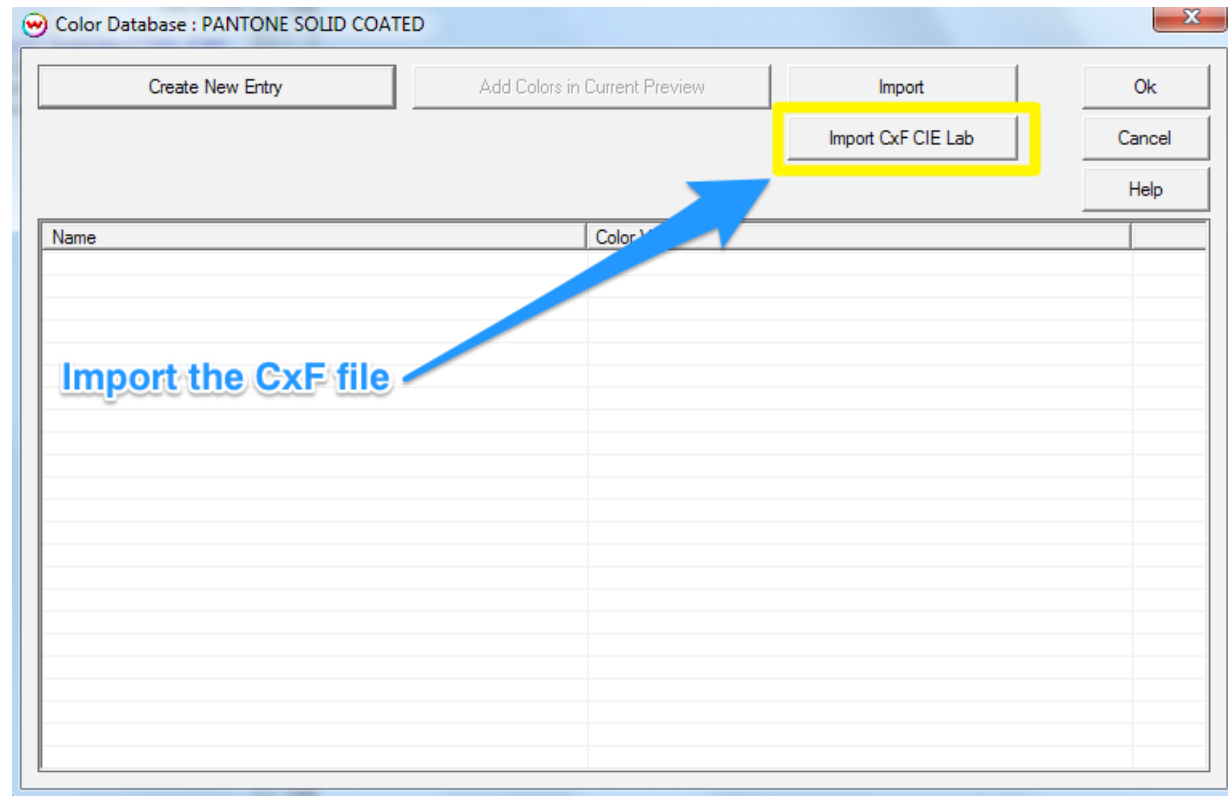




## Using PANTONE® Named Colors with Wasatch

Importing CxF Data into a Wasatch Color Database (continued)

Click “Import CxF CIE Lab” to build the color swatches.



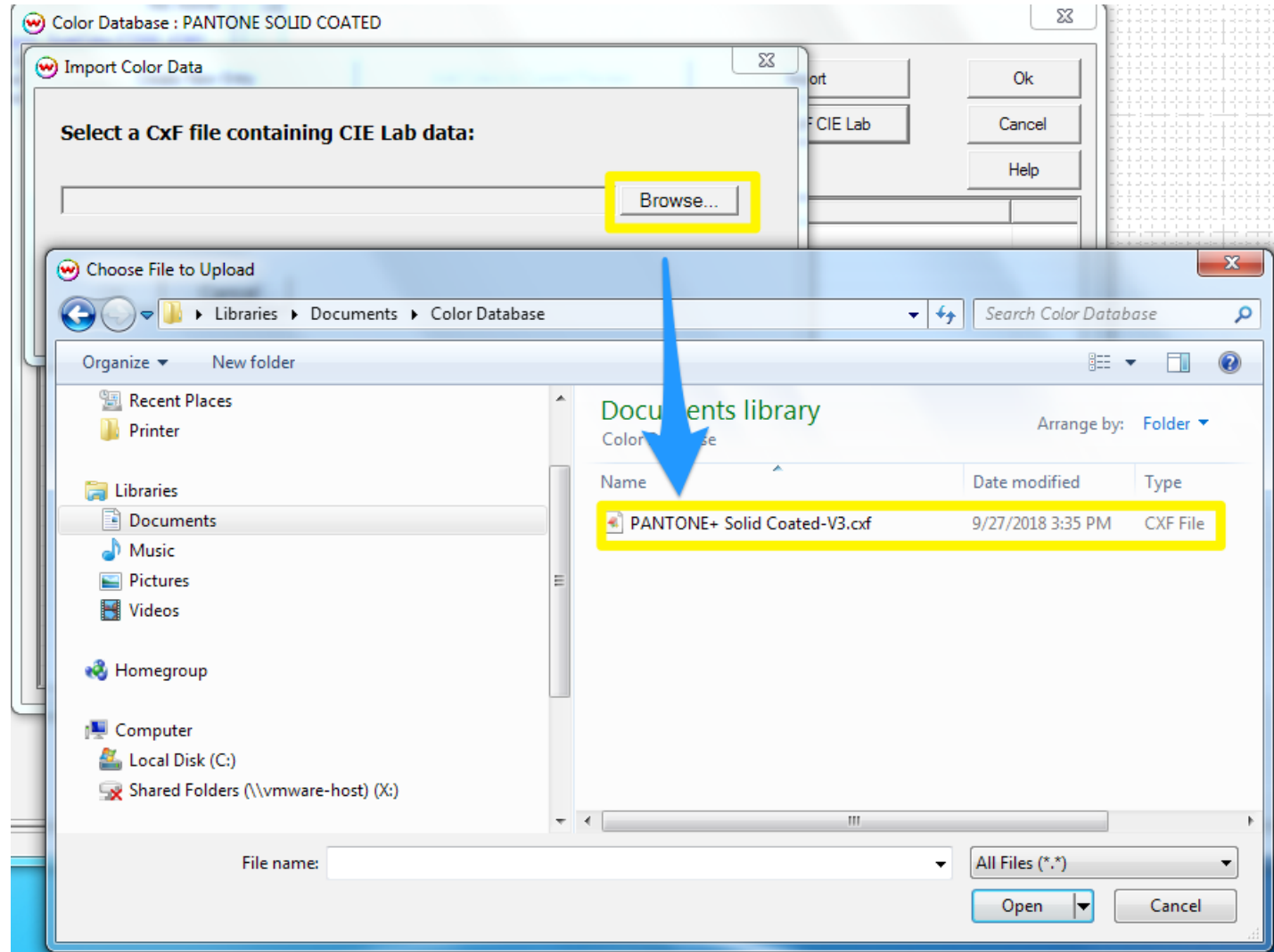




## Using PANTONE® Named Colors with Wasatch

Importing CxF Data into a Wasatch Color Database (continued)

Browse for the CxF file and select it.

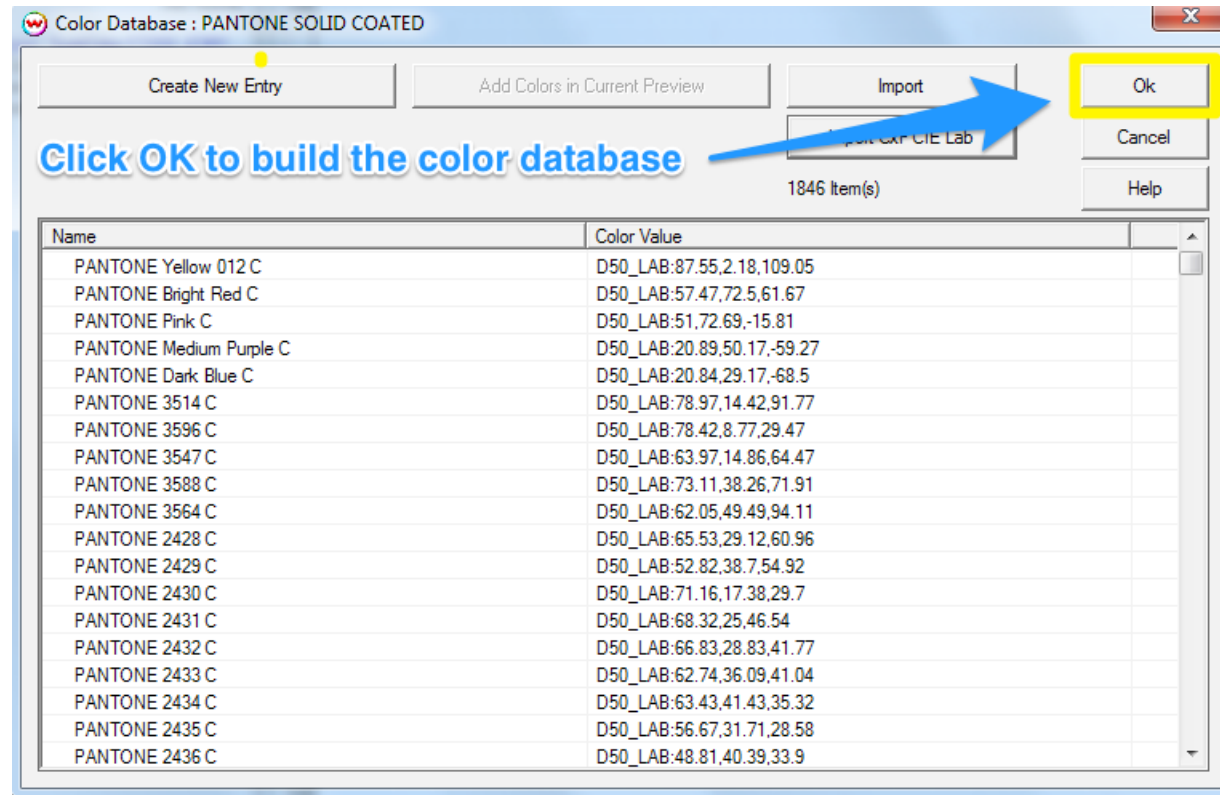




## Using PANTONE® Named Colors with Wasatch

Importing CxF Data into a Wasatch Color Database (continued)

Then build the color database by clicking OK.



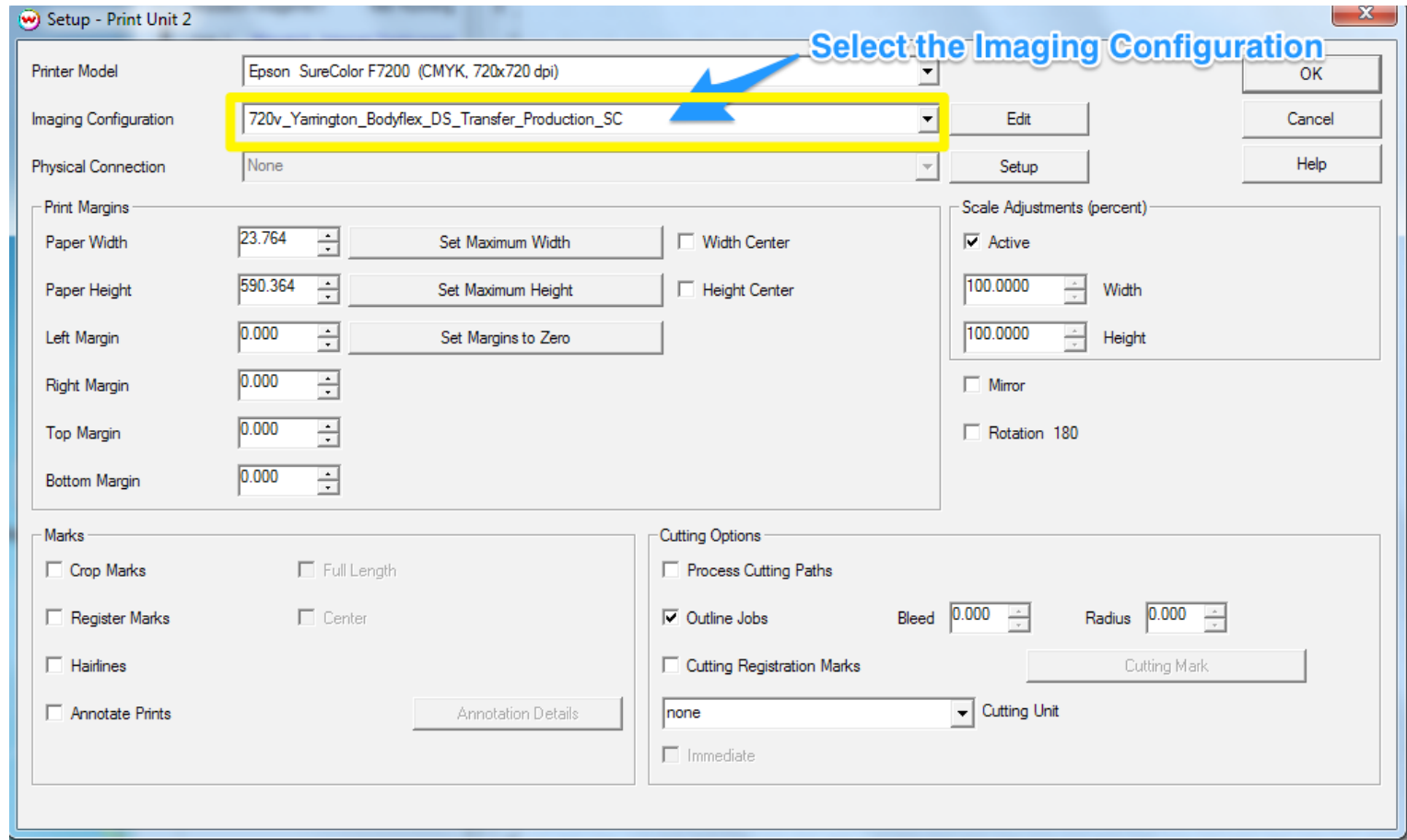
Now that the database of swatches is built, these swatches can be applied to any Imaging Configuration that has an ICC profile embedded in it.



## Using PANTONE® Named Colors with Wasatch

Loading the Color Database into a Print Imaging Configuration

Select the printer and print imaging configuration and click OK.

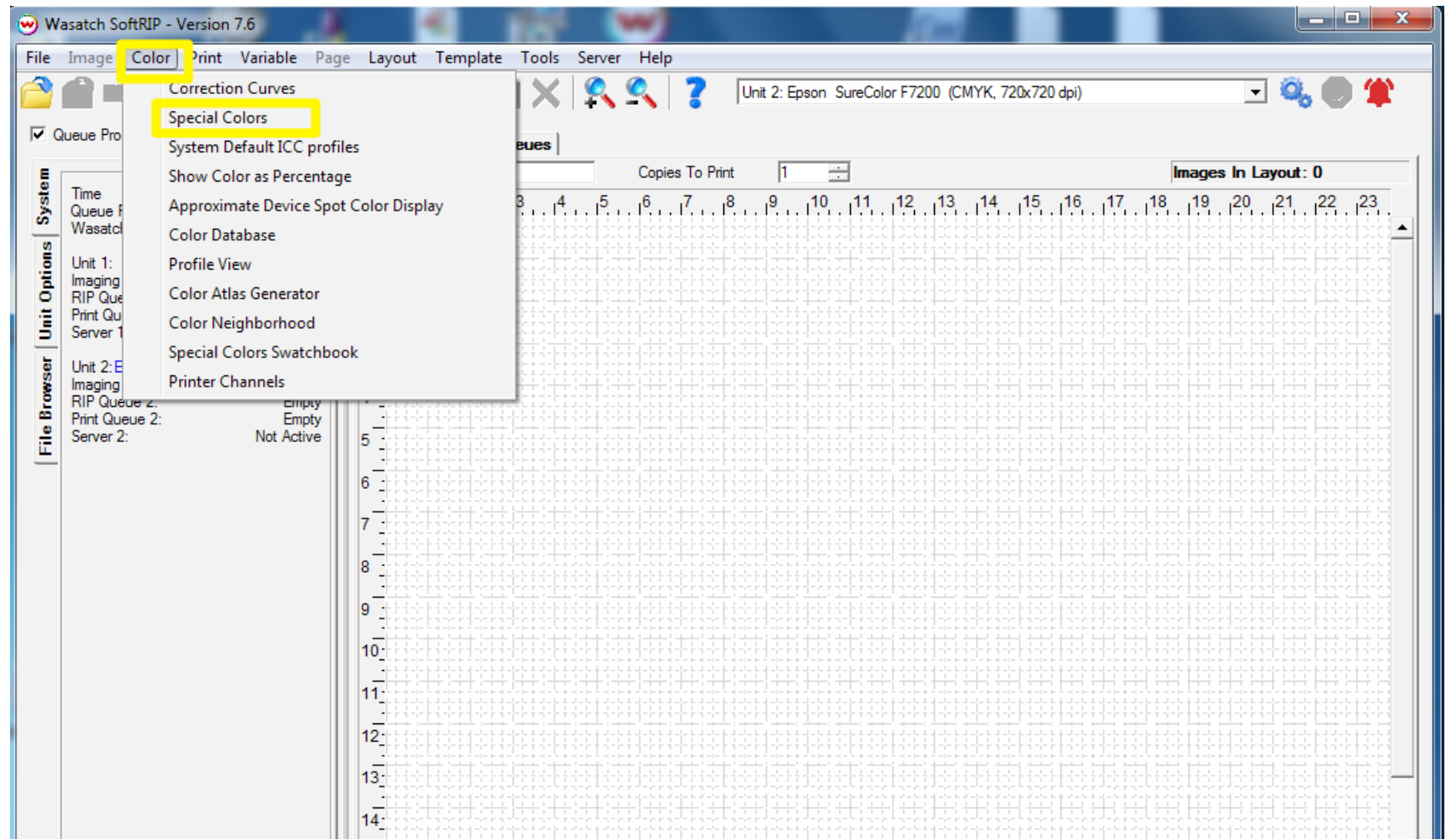




## Using PANTONE® Named Colors with Wasatch

Loading the Color Database into a Print Environment (continued)

Select Color->Special Colors from the Main Menu.

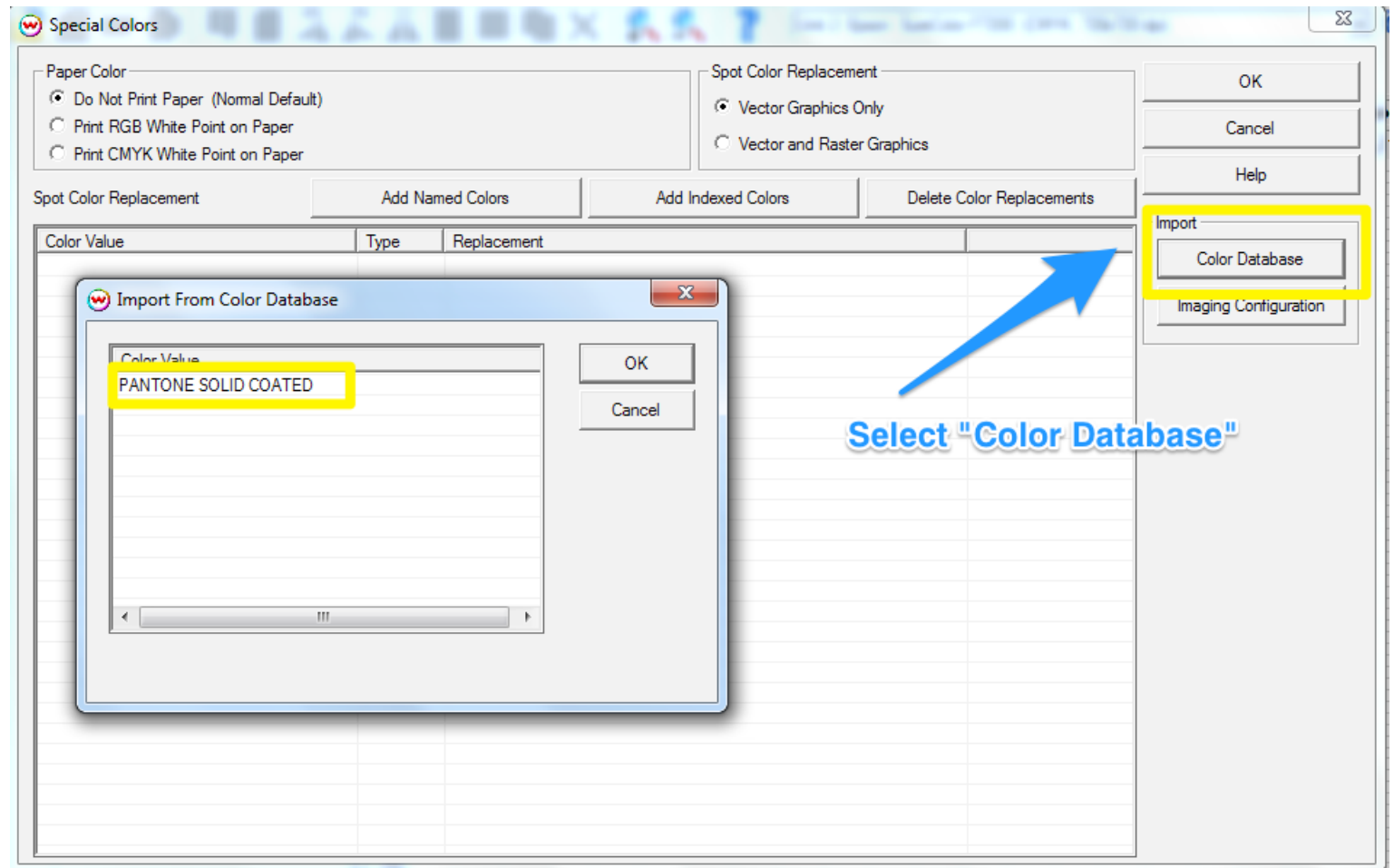




## Using PANTONE® Named Colors with Wasatch

Loading the Color Database into a Print Environment (continued)

Select “Color Database” to build the spot color library for the print environment.

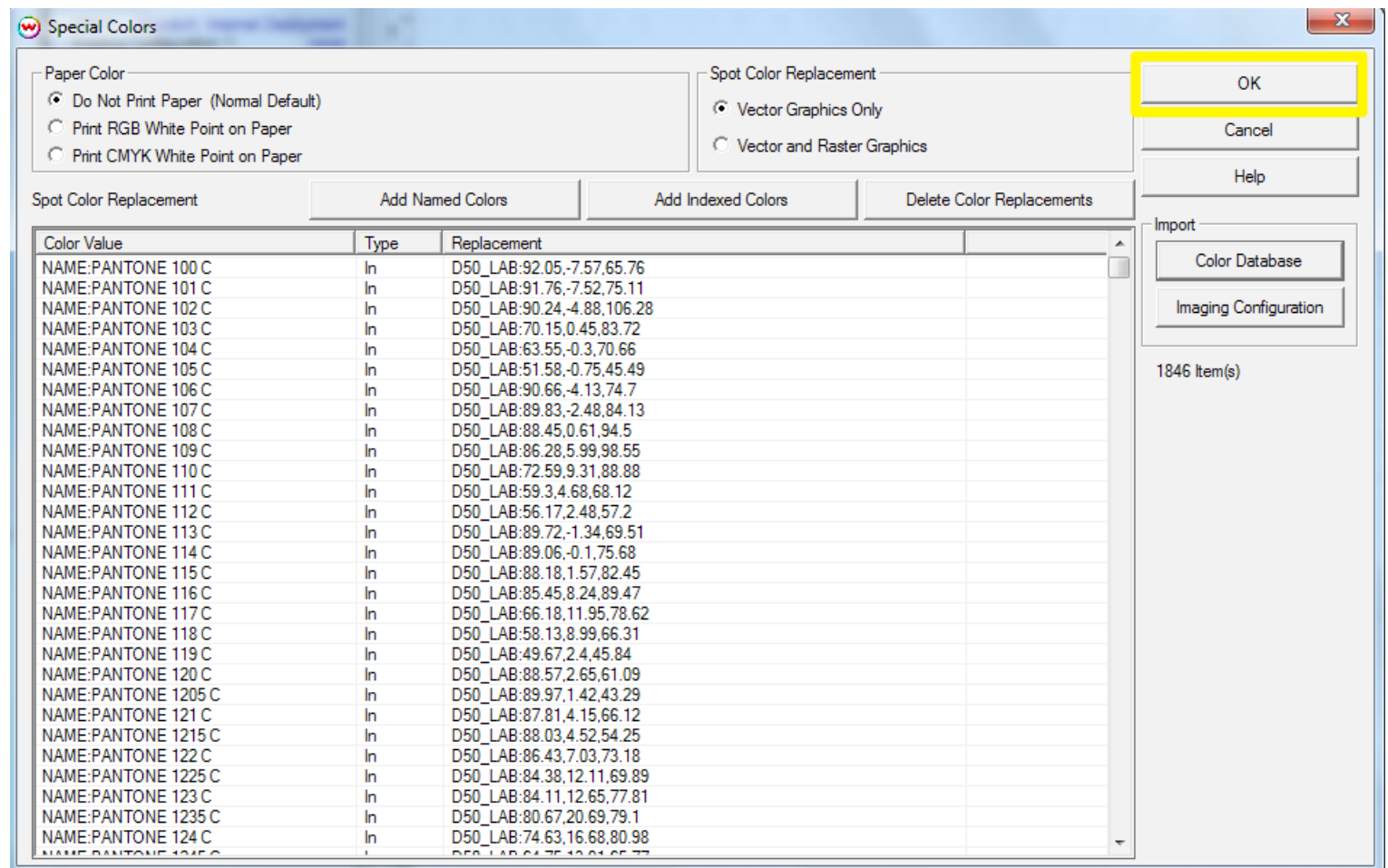




## Using PANTONE® Named Colors with Wasatch

### Loading the Color Database in a Print Environment (continued)

Select OK to load the spot color library into the print environment. You may need to rename the print environment to save it.



## Using PANTONE® Named Colors with Wasatch

## Using the Special Colors

If you are using PANTONE Solid Coated or Solid Uncoated, you can verify that the spot colors are recognized. Just open the “Pantone Spot Test.pdf” file that is found at VistaLogics.com in Layout. The first row of squares are PANTONE Solid Coated swatches. The second row are PANTONE Solid Uncoated swatches. Unrecognized colors will be represented by black squares. Squares with recognized named colors will be the correct color. The squares for unrecognized colors will be black.

