



PANTONE® Converter for Wasatch SoftRIP

IMPORTANT NOTICE

A licensed copy of PANTONE® Color Manager is required to use PANTONE® Converter for Wasatch SoftRIP. [PANTONE® Color Manager](#) is a product of X-Rite Incorporated. The license for use of PANTONE® Color Manager and PANTONE® products can be granted only by X-Rite Incorporated. PANTONE® Converter for Wasatch is a product of VistaLogics which is not affiliated with X-Rite.

Wasatch Computer Technology LLC does not authorize this program. VistaLogics has reverse engineered Wasatch SoftRIP interfaces without the permission or help of Wasatch Computer Technology. Updates to Wasatch SoftRIP may prevent the VistaLogics program, PANTONE® Converter for Wasatch, from functioning correctly.

Wasatch SoftRIP Upgrade May Be Required

You may need to upgrade your version of Wasatch SoftRIP to the latest version to use this program.

PURPOSE OF PANTONE® Converter for Wasatch SoftRIP

This program converts a text file or CxF3 file of named colors and their associated L*a*b* color values to a comma delimited file (csv) file that can be imported into a Wasatch SoftRIP Color Database. PANTONE® Color Manager can be used to create a conforming csv or CxF3 file.

The output file is in the following format (the skipped lines are for clarity only):

SPOTCOLOR_NAME,L_value,a_value,bValue

For example:

Color 1,90.05,-8.57,65.75

Color 2,80.75,-4.52,75.25

Color 3,60.25,-4.05,20.25

Color 4; D50_LAB:40.10,-1.35,10.85

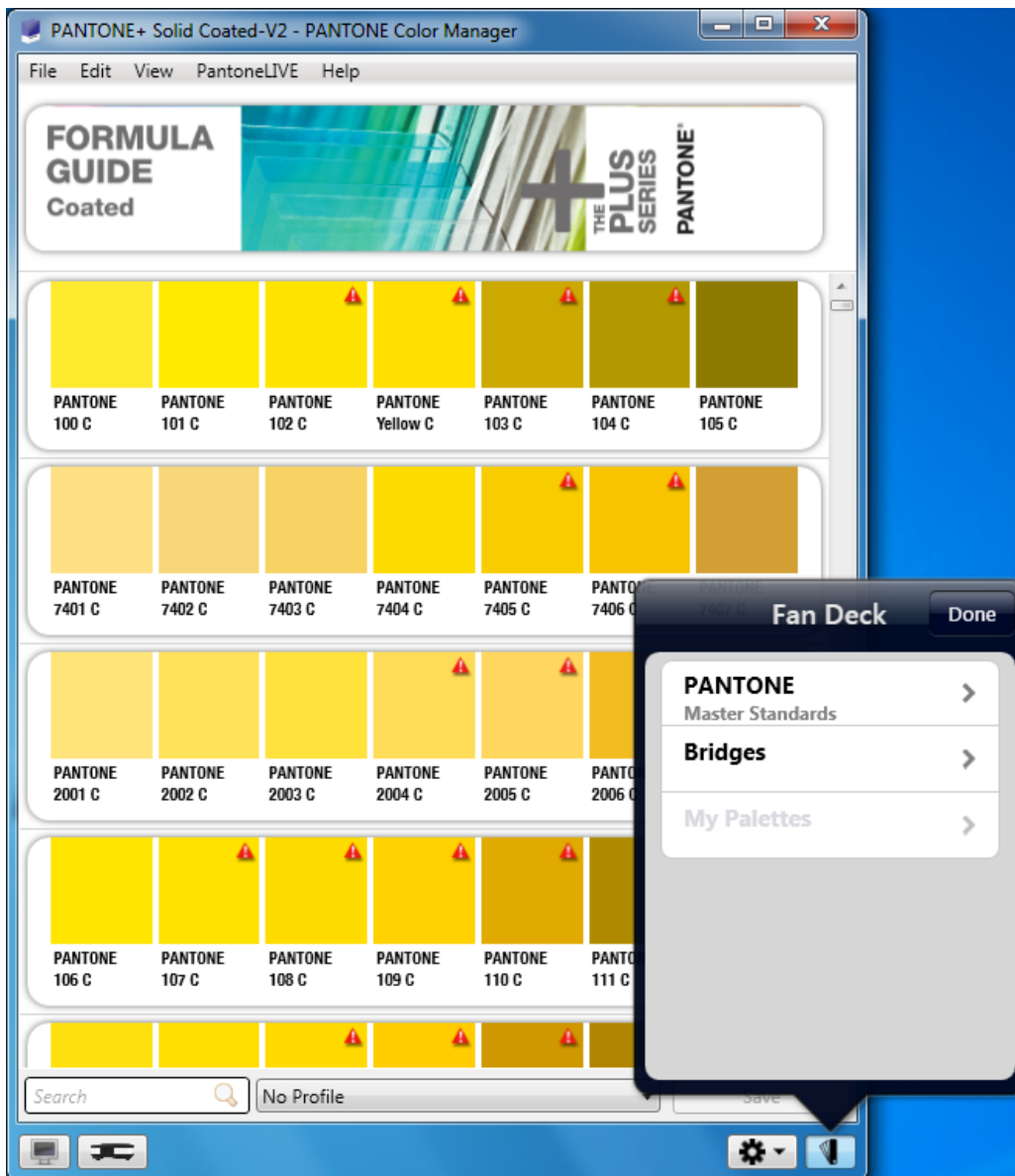


PANTONE® Converter for Wasatch SoftRIP

PART 1: Create a CSV File with L*a*b* values using PANTONE® Color Manager

When you start PANTONE® Color Manager, it will load the most recent set of PANTONE® Color Books. Once the Color Books are loaded, select the one you wish to use as Special Colors in Wasatch SoftRIP.

Open PANTONE® Color Manager:





PANTONE® Converter for Wasatch SoftRIP

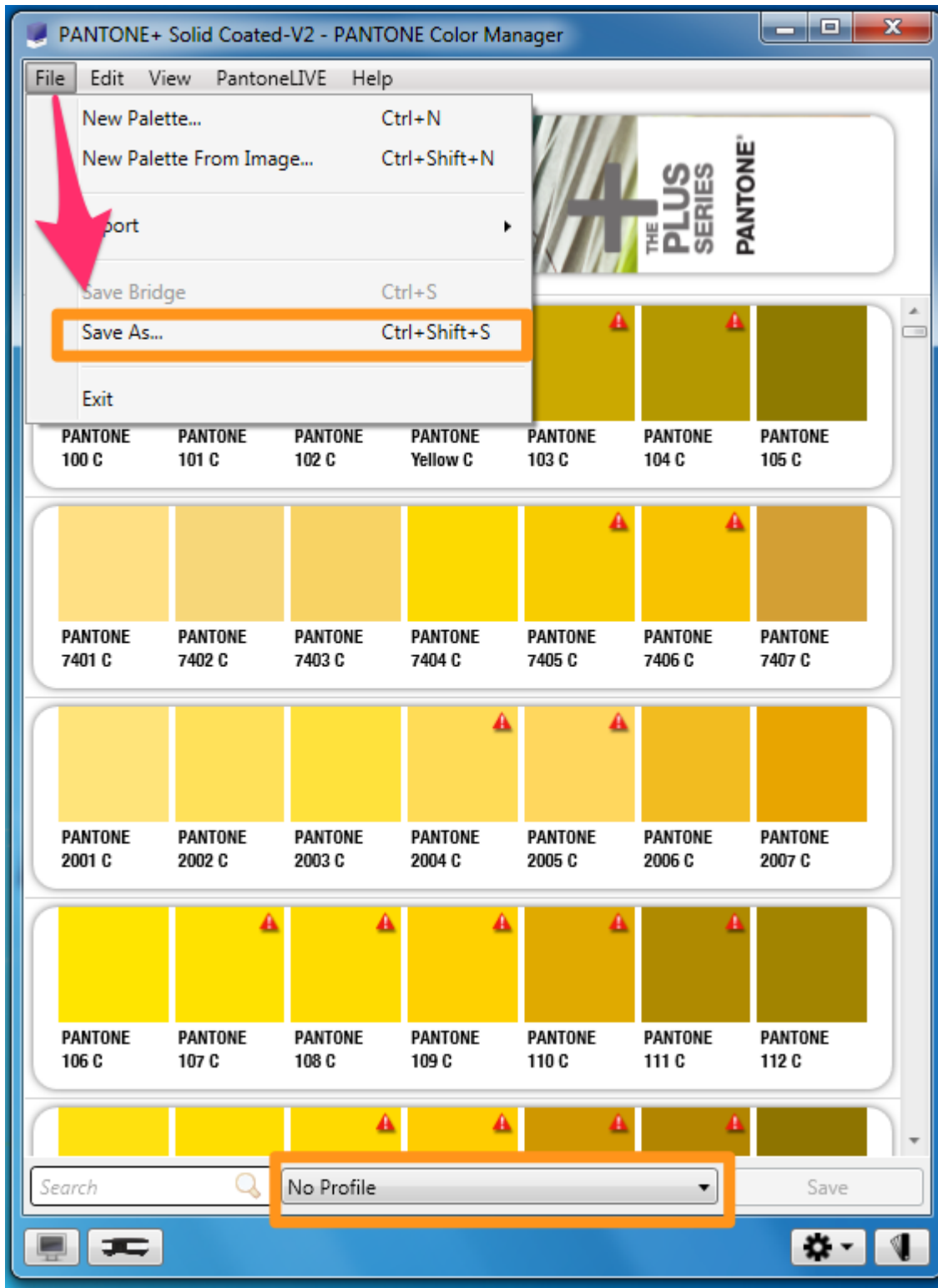
Select the Color Book from the list of fan decks.





PANTONE® Converter for Wasatch SoftRIP

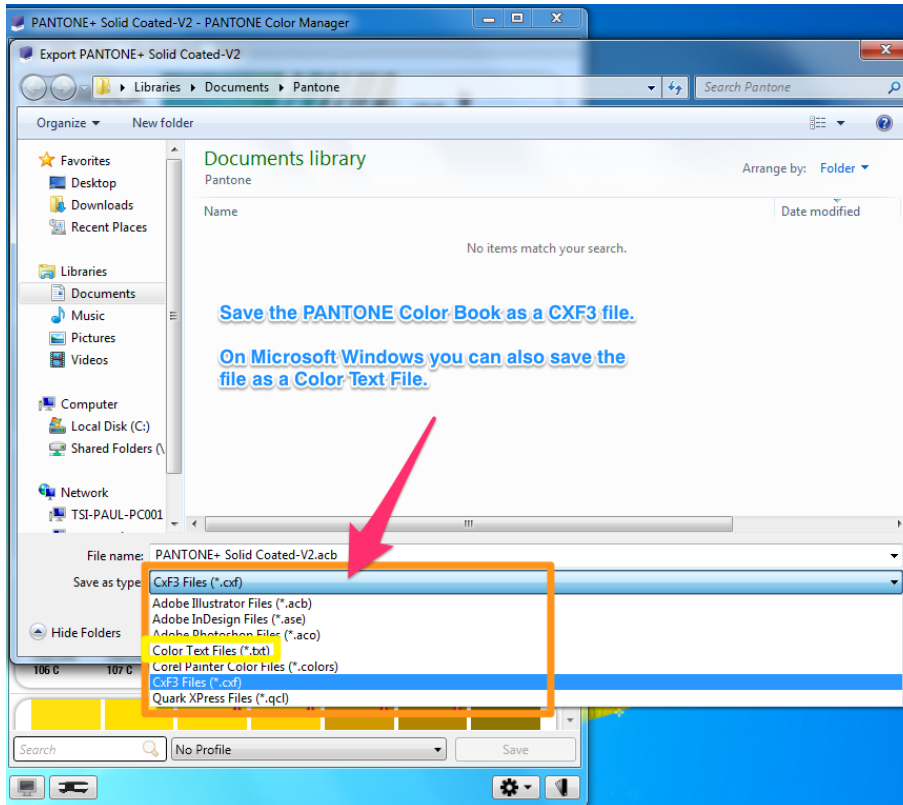
Make sure the output is set to no profile. Then select “Save As...” from the File menu:



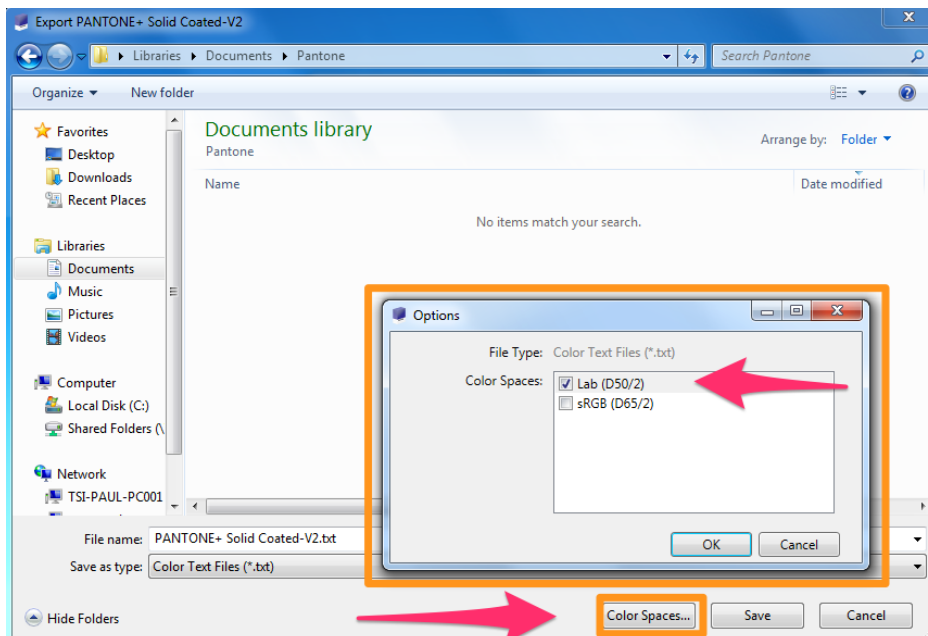


PANTONE® Converter for Wasatch SoftRIP

On Microsoft windows you can also save the file as a Color Text File (txt.) On a Mac you may need to save the file as a Color Exchange Version 3 (CxF3) file. Some CxF3 files may not convert properly.



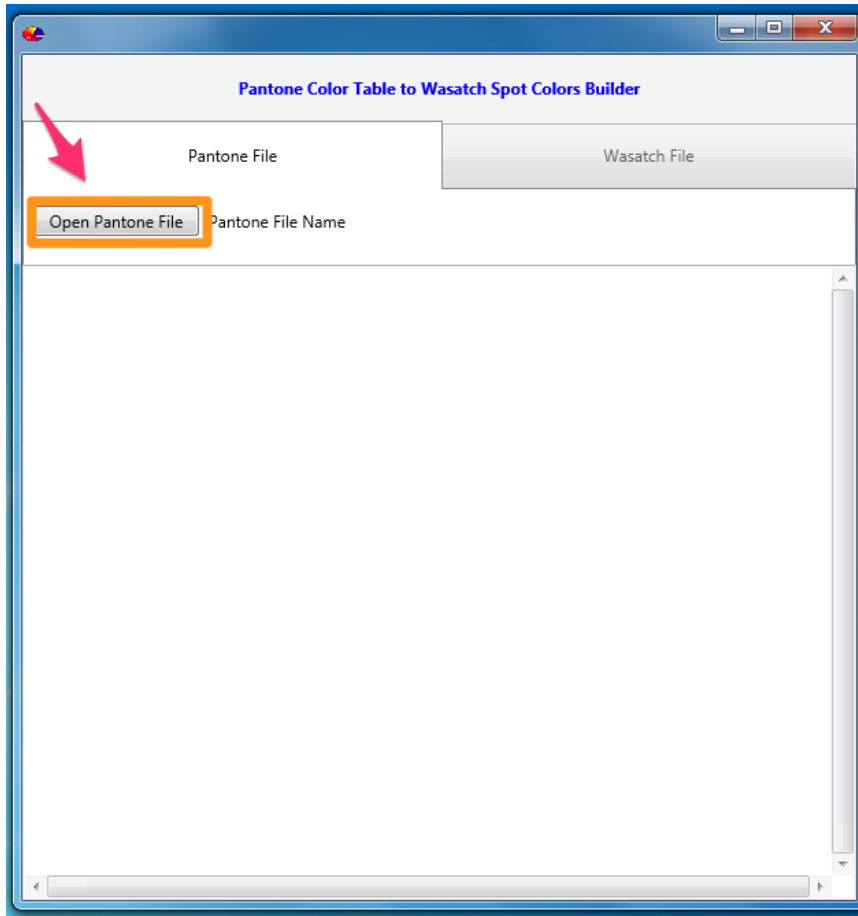
Make sure the Lab (D50/2) Color Space option is selected.



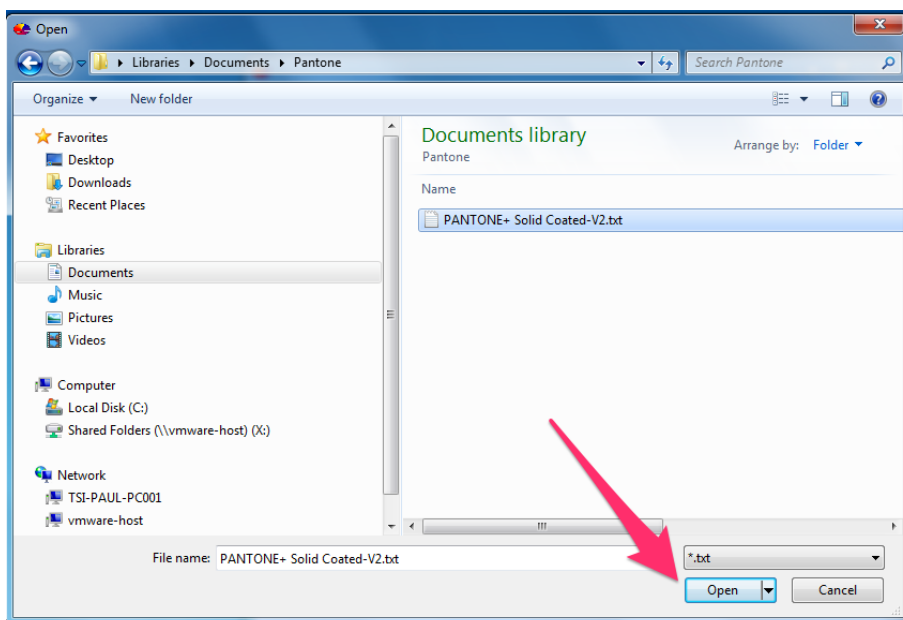


PANTONE® Converter for Wasatch SoftRIP

Now open PANTONE® Converter for Wasatch SoftRIP and click the “Open Pantone File” button.



And select the file you created with PANTONE® Color Manager.





PANTONE® Converter for Wasatch SoftRIP

If the file is valid, the file contents will appear in the tab window and the “Wasatch File” tab will be active. Click to open the “Wasatch File” tab.

Pantone Color Table to Wasatch Spot Colors Builder

Pantone File Wasatch File

Open Pantone File PANTONE+ Solid Coated-V2.txt

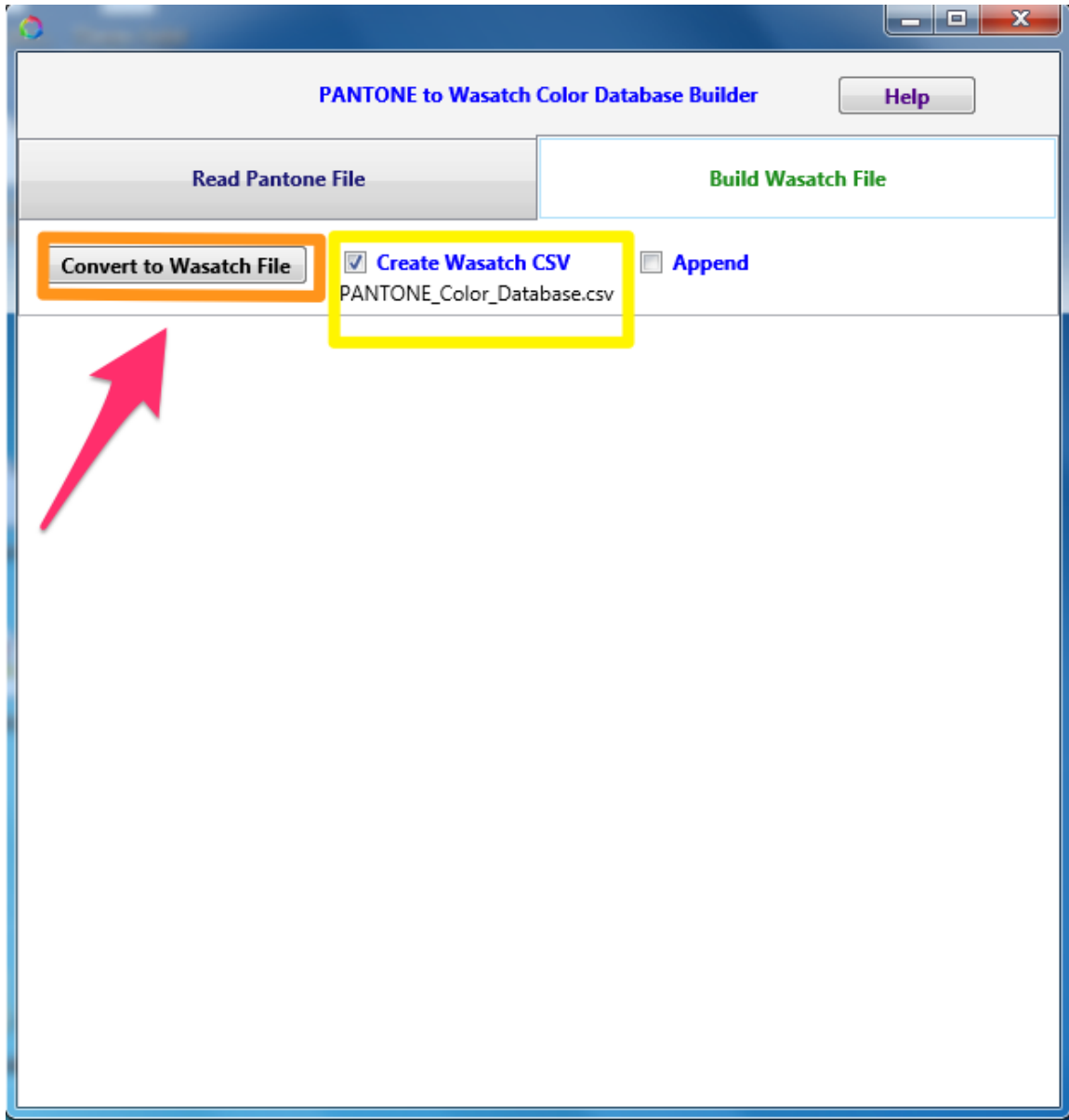
Name	L*	a*	b*
PANTONE 100 C	92.05	-7.57	65.76
PANTONE 101 C	91.76	-7.52	75.11
PANTONE 102 C	90.24	-4.88	106.28
PANTONE Yellow C		88.98	-1.32 110.86
PANTONE 103 C	70.15	0.45	83.72
PANTONE 104 C	63.55	-0.3	70.66
PANTONE 105 C	51.58	-0.75	45.49
PANTONE 7401 C	90.2	1.55	32.2
PANTONE 7402 C	87.03	1.42	34.31
PANTONE 7403 C	85.9	2.77	43.04
PANTONE 7404 C	87.53	-0.92	73.84
PANTONE 7405 C	83.84	2.32	89.62
PANTONE 7406 C	81.45	6.79	88.59
PANTONE 7407 C	68.94	11.13	46.49
PANTONE 2001 C	91.25	-0.27	38.46
PANTONE 2002 C	90.26	-0.08	51.27
PANTONE 2003 C	90.25	-1.57	61.49
PANTONE 2004 C	89.28	2.76	51.83
PANTONE 2005 C	88.32	6.51	47.96
PANTONE 2006 C	79.26	9.66	60.43
PANTONE 2007 C	72.31	15.73	68.38
PANTONE 106 C	90.66	-4.13	74.7
PANTONE 107 C	89.83	-2.48	84.13
PANTONE 108 C	88.45	0.61	94.5
PANTONE 109 C	86.28	5.99	98.55
PANTONE 110 C	72.59	9.31	88.88
PANTONE 111 C	59.3	4.68	68.12

Click after opening PANTONE file



PANTONE® Converter for Wasatch SoftRIP

If you want to add the new set of colors to an existing set, the check the “Append” box. Then click on the “Convert to Wasatch File” button to build the csv (comma separated values) file. This csv file is required by Wasatch and will be imported into a color database.





The screenshot displays two overlapping windows. The top window is the 'PANTONE to Wasatch Color Database Builder' application. It features a 'Read Pantone File' button on the left and a 'Build Wasatch File' button on the right. Below these is a 'Convert to Wasatch File' button. A list of Pantone color codes is visible, including 'PANTONE 100 C,92.05,-7.57,65.76' and 'PANTONE 101 C,91.76,-7.52,75.11'. An orange arrow points from the text 'Make sure you know where you saved the file' to the 'Save As' button in the application's interface.

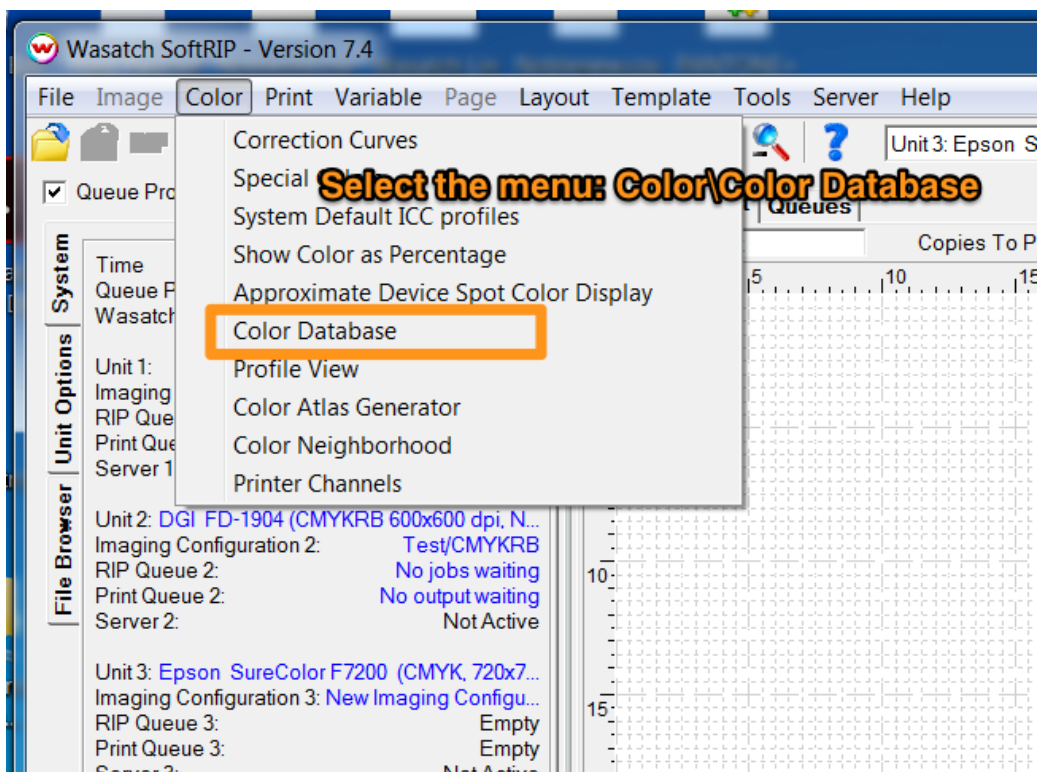
The bottom window is a Windows File Explorer showing the 'Documents' library. The search bar contains 'Wasatch'. The file list is empty, with the message 'No items match your search.' displayed. An orange arrow points from the text 'You can name the file anything as long as it ends in .csv' to the 'File name' field, which contains 'PANTONE_Color_Database.csv'. The 'Save as type' dropdown is set to 'All files (*.*)'. The 'Save' and 'Cancel' buttons are at the bottom right.



PANTONE® Converter for Wasatch SoftRIP

PART 2: Import the CSV File with L*a*b* into Wasatch SoftRIP

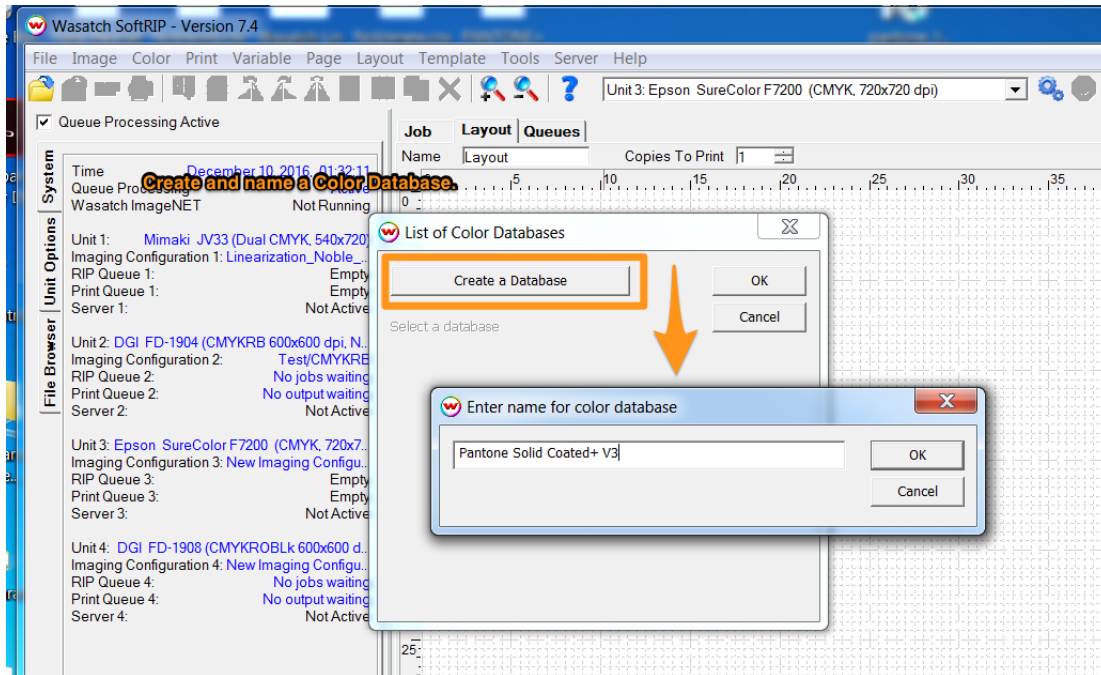
Open Wasatch SoftRIP and select the Color dropdown menu. Then select “Color Database.”





PANTONE® Converter for Wasatch SoftRIP

Create and name a Color Database.

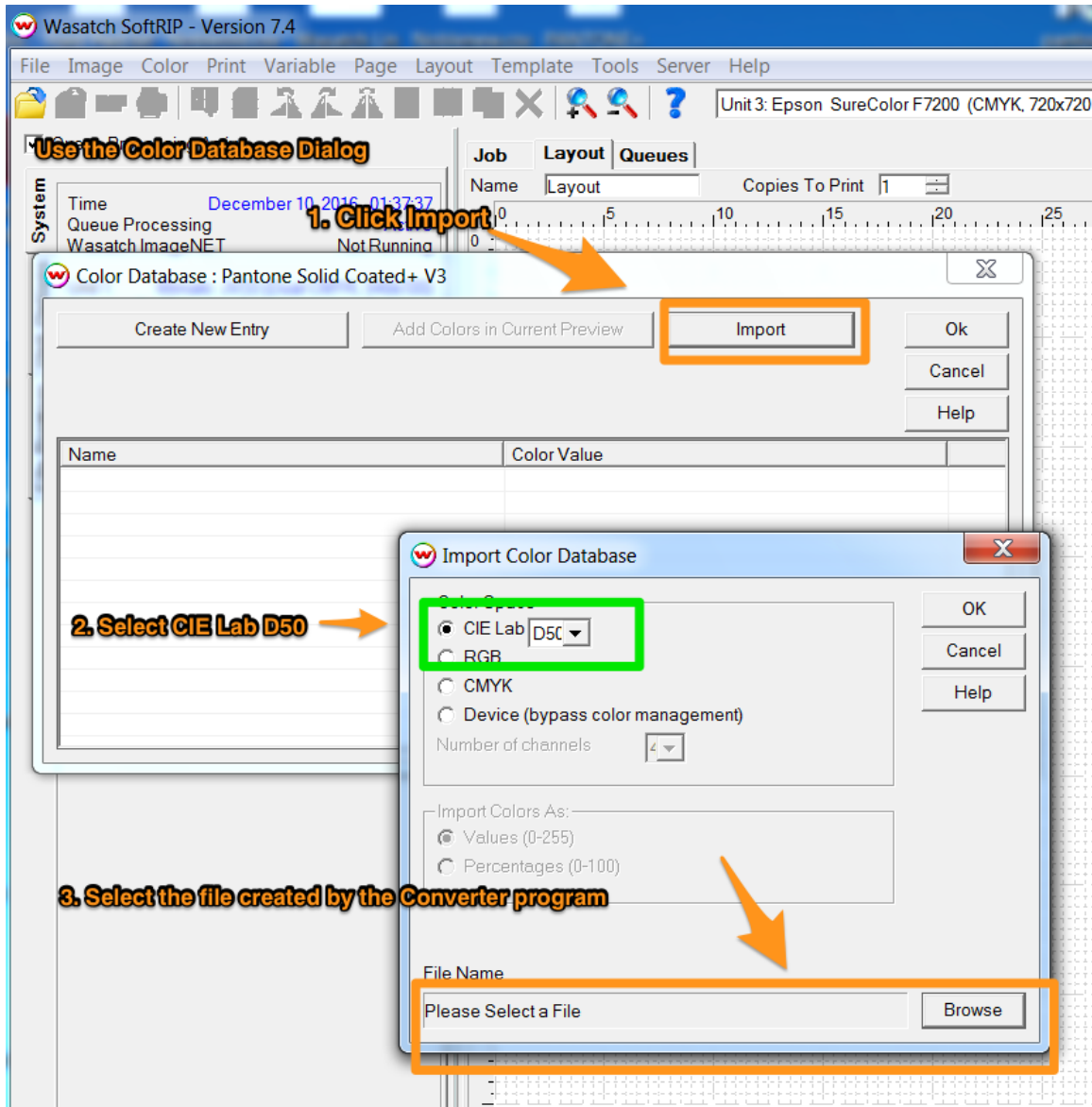




PANTONE® Converter for Wasatch SoftRIP

The Color Database dialog will appear. Then do the following:

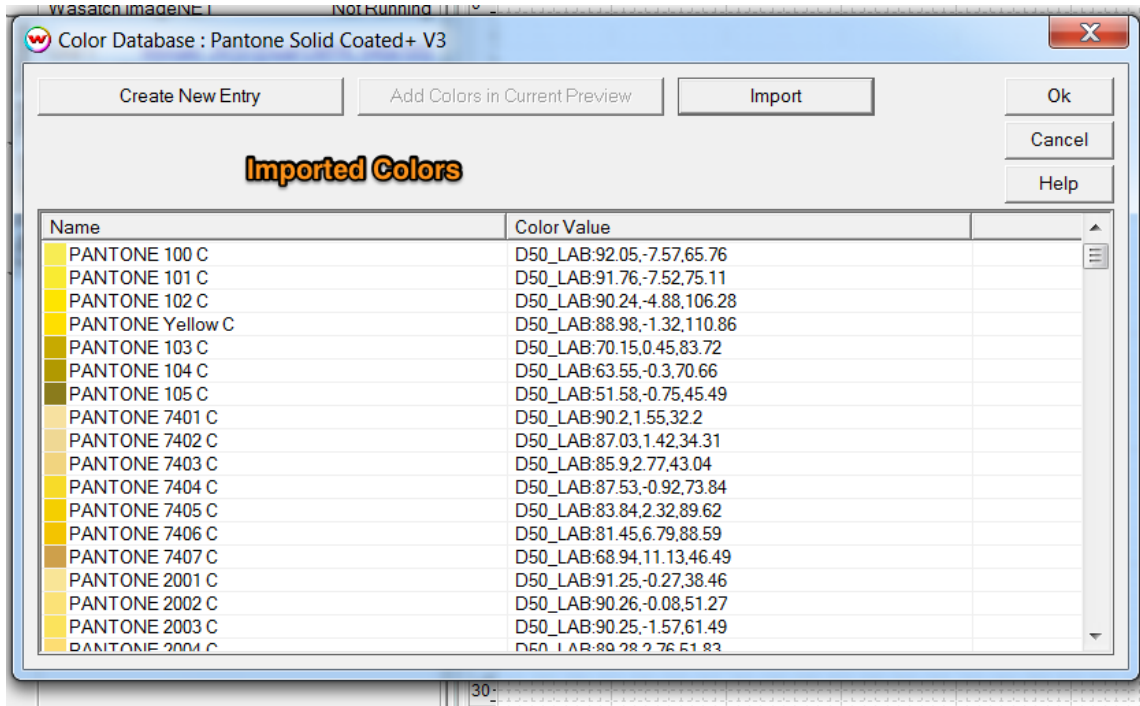
1. Click Import.
2. Select the CIE Lab Color Space.
3. Browse for and select the file created by PANTONE® Converter.



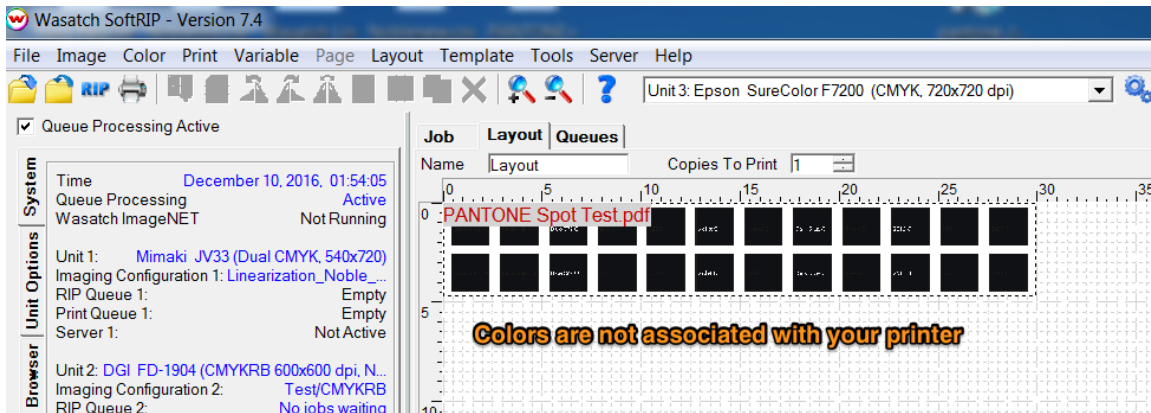


PANTONE® Converter for Wasatch SoftRIP

When you click OK, the colors will be imported in Wasatch SoftRIP.



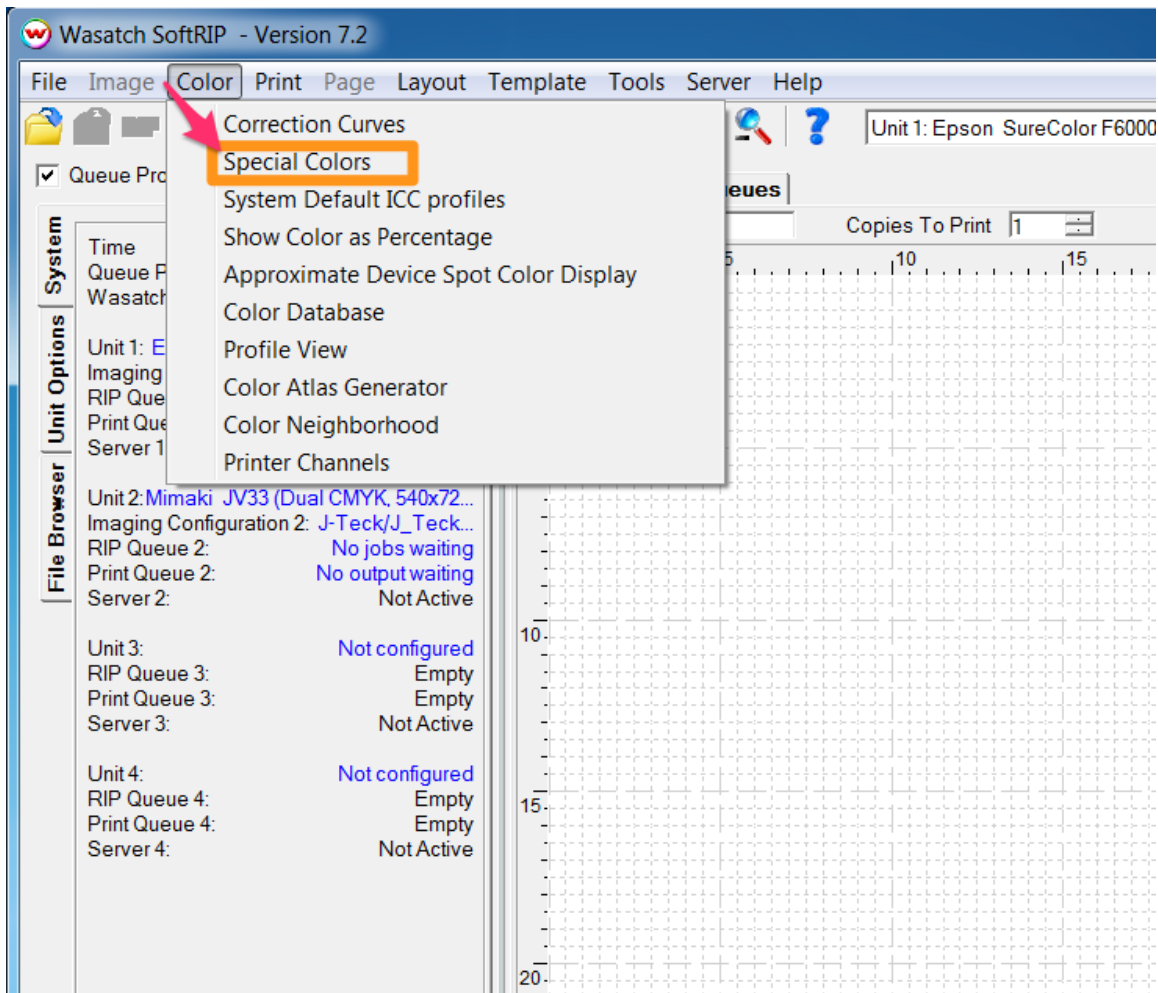
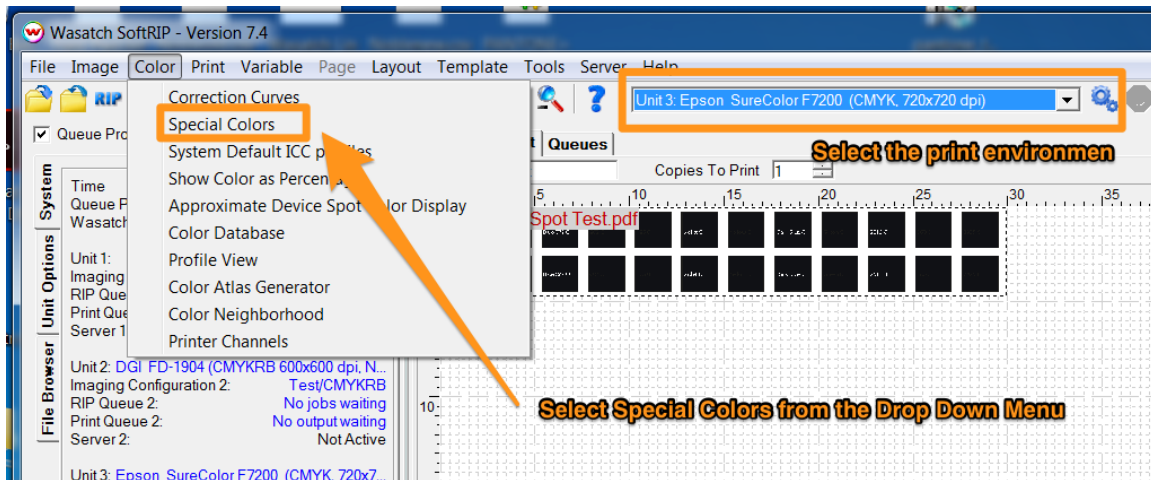
But the colors are not yet associated with your printer settings.





PANTONE® Converter for Wasatch SoftRIP

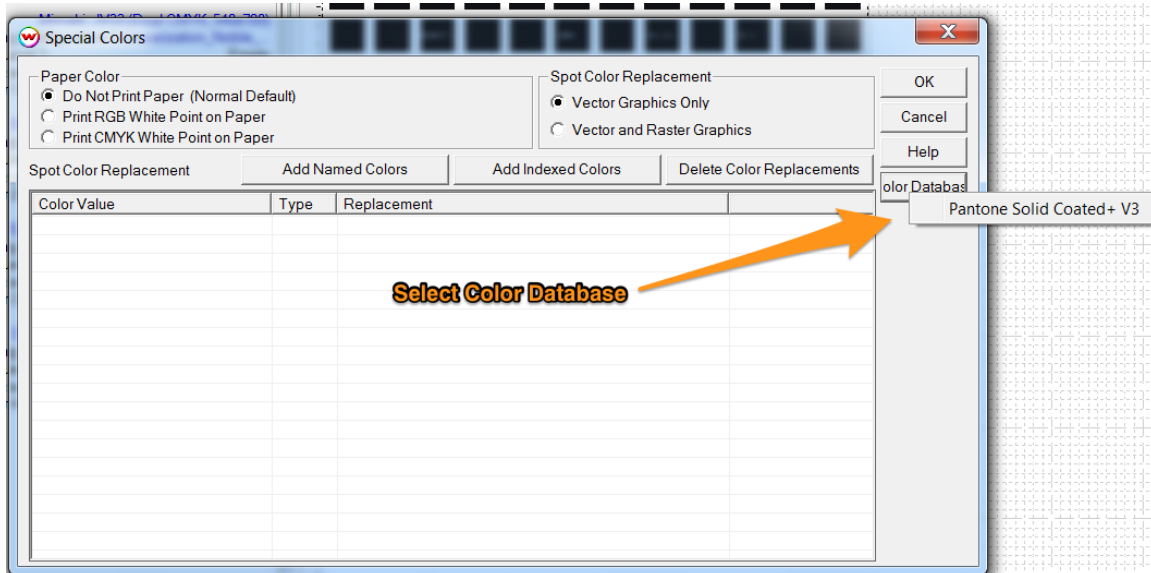
Once the file is saved, open the “Color” menu in Wasatch SoftRIP and select “Special Colors” from the menu.



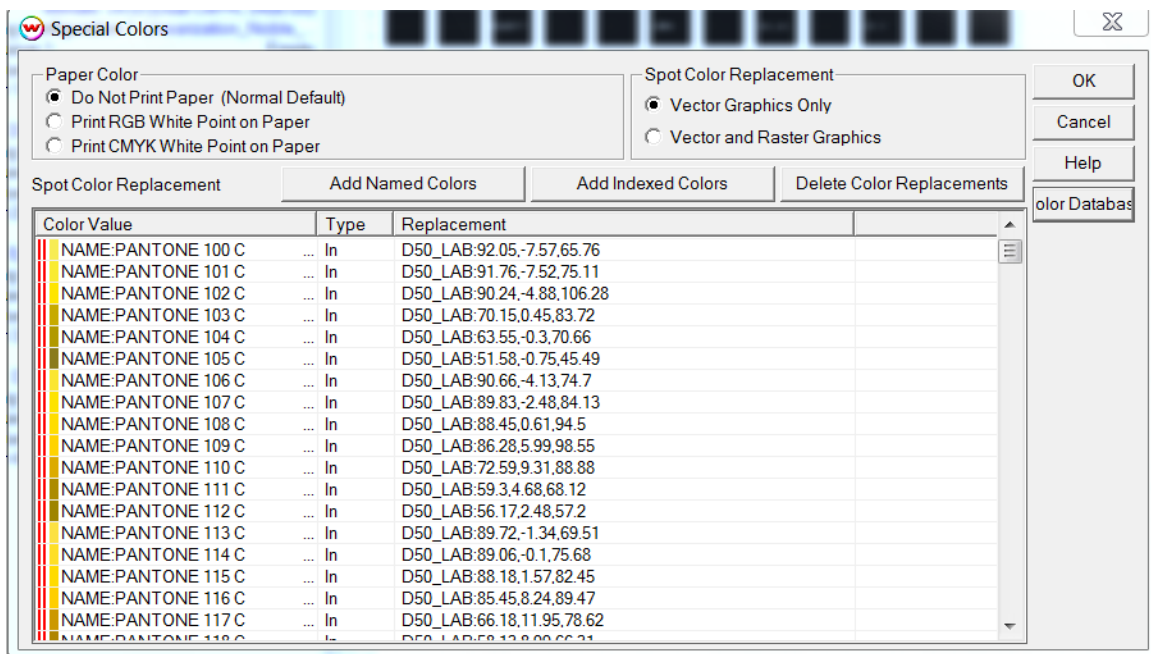


PANTONE® Converter for Wasatch SoftRIP

From the Special Colors dialog, select your Color Database. This will import the Color Database into Special Colors.



Once the import is done the colors will appear in the Special Colors list.

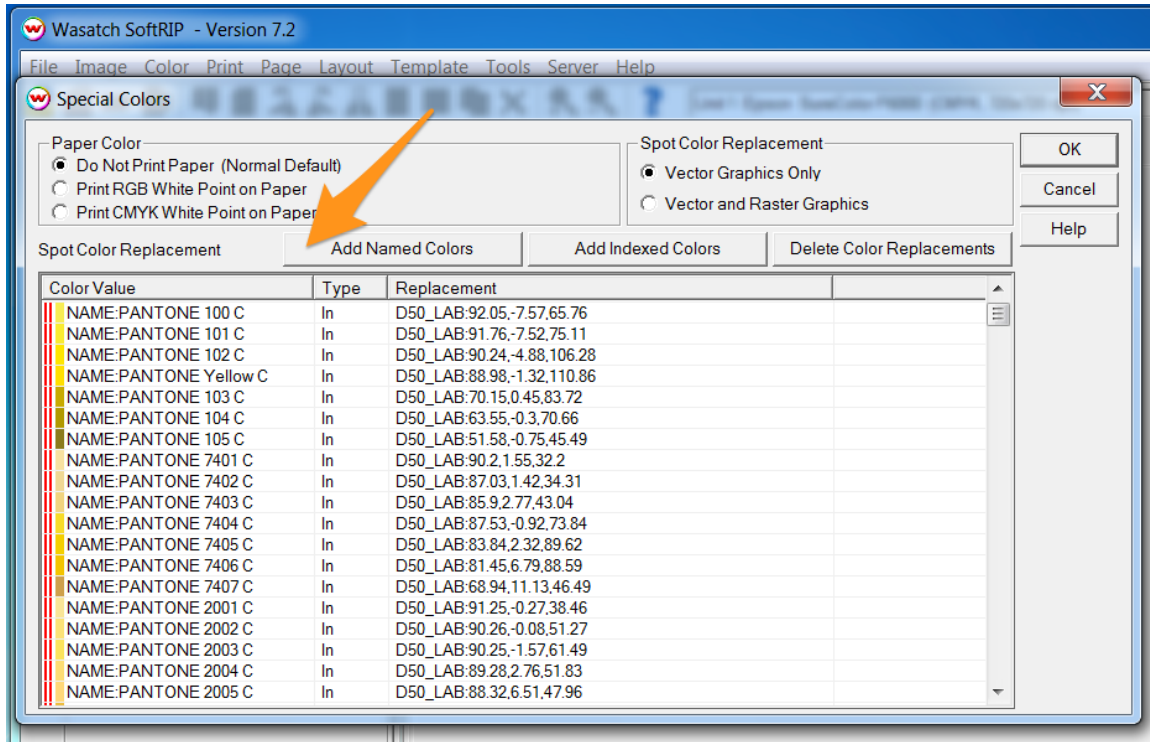


Click OK to save the Special Colors.



PANTONE® Converter for Wasatch SoftRIP

The named colors will show up as Special Colors. The L*a*b* values will be used for the named colors in Adobe files. For example, if PANTONE 100 C is used as a color in Adobe Illustrator, the L*a*b* values in the Special Colors table will be used to generate the printed output.





PANTONE® Converter for Wasatch SoftRIP

If you are using PANTONE Solid Coated or Solid Uncoated, you can verify that the spot colors are recognized. Just open the “Pantone Spot Test.pdf” file that is found at VistaLogics.com in Layout. Unrecognized colors will be black and recognized colors will be the correct color.

